

# ONYONE co.,LTD.

4327 TAKAMI, NAGAOKA, NIIGATA,  
940-8548, JAPAN  
Tel: +81-258-24-0048  
Fax: +81-258-24-5422  
e-mail: international@onyone.co.jp

## CHINA

### ONYONE CHINA CO.,LTD.

P.C 200062  
ROOM 508, 509, 5TH FLOOR, NO.31 BUILDING  
NO.28 DANBA ROAD, PUTUO DISTRICT  
SHANGHAI, CHINA  
Tel: +86-21-3250-1100  
Fax: +86-21-3250-2075  
e-mail: info@onyone.cn

## DISTRIBUTORS

### SWITZERLAND, LIECHTENSTEIN

#### BS TRADING AG

RIEDLÖSERSTRASSE 5  
7302 LANDQUART  
SWITZERLAND  
Tel: +41-81-330-0080  
Fax: +41-81-330-0082  
e-mail: bstrading@bstrading.ch

### AUSTRIA, FRANCE, SPAIN, GERMANY, ANDORRA, HUNGARY, CZECH REPUBLIC, SLOVAKIA, SLOVENIA and parts of ITALY

#### CTH GmbH

GRASSE 226  
6524 FEICHTEN KAUNERTAL  
AUSTRIA  
Tel: +43-664-4233-000  
e-mail: contact@raich-center.com

## CHINA

### BEIJING WANGLONG AOXUE INTERNATIONAL TRADE CO.,LTD.

3099, 21 TAI, WARKERS' STADIUM  
CHAO YANG DISTRICT BEIJING  
100027 CHINA  
Tel: +86-10-6553-0360

## KOREA

### SHINSEGAE SPORTS CO.,LTD.

2F, WOOCHANG B/D, 398-11,  
SUNGNAE-DONG, KANGDONG-GU,  
SEOUL, KOREA  
Tel: +82-2-473-1965  
Fax: +82-2-476-1966  
e-mail: master@shinsegaesports.co.kr

## SHOP

### HONG KONG FUN`N SNOW SKI SPORTS SPECIALTY SHOP

7/F., LOON KEE BUILDING  
275 DES VOEUX ROAD CENTRAL  
SHEUNG WAN, HONG KONG  
Tel: +86-852-2866-7847  
Fax: +86-852-2858-1292  
e-mail: enquiry@funnsnow.com

Please note that the actual goods may differ slightly from the design and color shown on the catalogue



# ONYONE

2014/2015 AUTUMN & WINTER COLLECTION

SKI SCHOOL, SKI CLUB, LIFT, STAFF AND ACCESSORIES



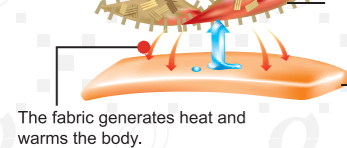
Photo credit Mario Curti

## TEMPERATURE CONTROL SYSTEM



### Small amount of perspiration Heat up

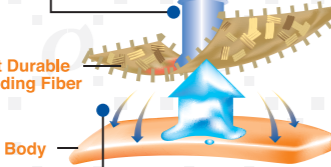
A special powder is integrated around the fiber in molecular level. It generates heat when absorbing moisture.



The fabric generates heat and warms the body.

### Large amount of perspiration Cool down

As the greater moisture is produced, the moisture is released giving a cooling down effect.



The action of evaporation heat cools down the body.

### Hyglater keeps you dry.

At the start up of the sporting activity, the special powder reacts to the moisture from perspiration and generates heat. This heat warms up the human body fast and gives better condition for the physical movement.

On the contrary, as soon as the greater moisture is produced, the special powder reacts and starts to cool down. The cooling down effect enables the human body to continue the sporting activity in the comfortable condition.

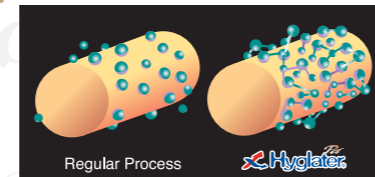
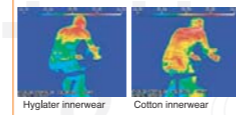


Illustration of Hyglater

### Thermograph comparison of Hyglater innerwear and cotton innerwear surface temperature during exercise



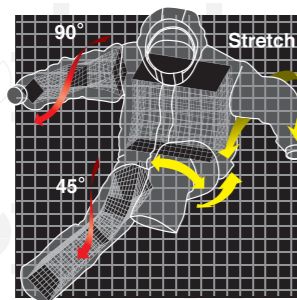
Hyglater innerwear Cotton innerwear

## 3D CUTTING /LIGHTWEIGHT TECHNOLOGY



### 3-dimensional cutting technique

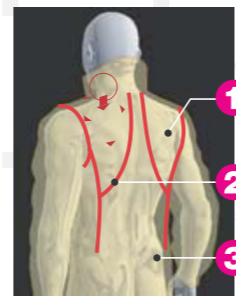
An analysis of the human body has been conducted by viewing its shape, movement and silhouette. From this analysis, we have developed a special 3-dimensional cutting allowing all movements in the high level.



## LIGHTWEIGHT TECHNOLOGY

### Reduces stress for better comfortability.

- Weight and feeling of heaviness of the clothing are stress for the athletes and they can disturb their concentration and sustaining power.
- Lightweight technology is a special system, which reduces the actual weight of the clothing and also improves the feeling of heaviness
- The main concept of this system is to reduce stress for better comfortability.



## PERFORMANCE

### ICON CHART



Temperature control system. Hyglater controls the temperature of your skin and muscle.



The stretchable fabric supports your body movement and gives you comfortable fitting.



Color resistance level 6 - 7 based on ONYONE's original testing method



Color resistance level 3 - 4 JIS L0842



Waterproofness 10,000H<sub>2</sub>O/ Full seam sealed



Waterproofness 10,000H<sub>2</sub>O/ Crucial part seam sealed



Waterproofness 10,000H<sub>2</sub>O



Moisture permeability 8,000g/m<sup>2</sup>/24hrs



Moisture permeability 6,000g/m<sup>2</sup>/24hrs

## COLOR ORDER SYSTEM/MARKING



### CHOOSE YOUR FAVORITE COLOR



### PRINTING, EMBROIDERY AND BADGES

We offer makings for your logos, logos of your sponsors or other requests as well. You will find the marking places on the design and also information about the max. size for each position. We offer printing, embroidery and badges.

All our products which are marked with the logo can be ordered in your favorite colors. The colors shown in this catalog are just a sample for reference. Please visit our webpage ([www.onyone.co.jp/english](http://www.onyone.co.jp/english)) to create your own design or get in contact with your dealer. Your dealer will support you to find your favorite design.



	width	height
Pos. 1	xx cm	xx cm
Pos. 2	xx cm	xx cm
Pos. 3	xx cm	xx cm
Pos. 4	xx cm	xx cm
Pos. 5	xx cm	xx cm

Please contact your dealer for necessary information about the marking data.

## COLOR RESISTANCE

# COLOR RESISTANCE

ONYONE's exclusive color treatment allows our fabric to keep its original color after exposed to strong sunlight for long term usage. Each of our original fabrics is tested and fully controlled under our original testing method which has been developed under JIS (Japanese Industrial Standards). \*ONYONE has develop its own quality standard above level 5

SKI SCHOOLS  
- OUTER SHELL -

**LEVEL 6~7**

SS STRETCH 2L/SS OXFORD 2L  
Test method for color fastness to enclosed carbon arclamp light (JIS L0842 1~5)

SKI CLUBS  
- OUTER SHELL -

**LEVEL 3~4**

SC STRETCH TWILL 2L  
Test method for color fastness to enclosed carbon arclamp light (JIS L0842 1~5)

SKI LIFT  
- OUTER SHELL/INNER -

**LEVEL 3~4**

SL 3L TAFFETA/EMBOSS TAFFETA  
Test method for color fastness to enclosed carbon arclamp light (JIS L0842 1~5)

## SIZE CHART

### MEN'S SCHOOL, CLUB, LIFT JACKET

EU SIZE	XXS/42	XS/44	S/46	M/48	L/50	XL/52	XXL/54	3XL/56	4XL/58
HEIGHT	160	165	170	175	180	185	190	195	200
CHEST	86	90	94	98	102	106	110	114	118
UNIT	cm	cm	cm	cm	cm	cm	cm	cm	cm

### LADIES' SCHOOL JACKET

EU SIZE	34	36	38	40	42	44
HEIGHT	160	163	166	169	172	175
CHEST	80	84	88	92	96	100
UNIT	cm	cm	cm	cm	cm	cm

### MEN'S SCHOOL, CLUB, LIFT PANTS

EU SIZE	XXS/42	XS/44	S/46	M/48	L/50	XL/52	XXL/54	3XL/56	4XL/58
HEIGHT	160	165	170	175	180	185	190	195	200
WAIST	73	76	79	82	85	88	91	94	97
UNIT	cm	cm	cm	cm	cm	cm	cm	cm	cm

### LADIES' SCHOOL PANTS

EU SIZE	34	36	38	40	42	44
HEIGHT	160	163	166	169	172	175
WAIST	62	66	70	74	78	82
UNIT	cm	cm	cm	cm	cm	cm

### JUNIOR CLUB JACKET & PANTS

EU SIZE	116	128	140	152	164
HEIGHT	116	128	140	152	164
WAIST	63	65	67	71	75
UNIT	cm	cm	cm	cm	cm

**ONJ 17700**

**MEN'S CLASSIC JACKET**

**REGULAR FIT**



**Size:**  
XXS/42 ~ 4XL/58

**Fabric:**  
SS STRETCH

**Performance:**

**Insulation:**  
 BODY :80g  
 SLEEVE :60g

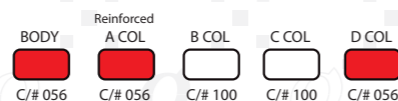
**Pockets:**  
 \* 2 side pockets  
 \* Big back pocket  
 \* Chest pocket under the front flap  
 \* Skipass pocket on the left sleeve  
 \* Inner mesh pocket

**Features:**  
 \* Velcro and zippers in same color as the fabric  
 \* Reinforced material on side and on shoulder  
 \* Detachable hood  
 \* Hood adjuster  
 \* Snowgater at cuffs  
 \* Ventilation zipper on side  
 \* Changeable collar (incl. 1 extra collar)  
 \* Receiver Loop



**Marking point**

	width	height
Pos.1	7 cm	3.5 cm
Pos.2	6 cm	3.5 cm
Pos.3	5 cm	2 cm
Pos.4	7 cm	3.5 cm
Pos.5	20 cm	11 cm
Pos.6	16 cm	9 cm



\* You can choose only 009(Black), 100(White), 056(Red) or 713(Blue) for the reinforced material.



Style No. SJ1



Style No. SJ2



Style No. SJ3



Style No. SJ4

**ONP 17720**

**MEN'S CLASSIC PANTS**

**REGULAR FIT**



**Size:**  
XXS/42 ~ 4XL/58

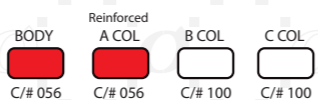
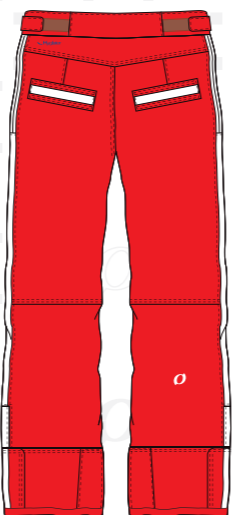
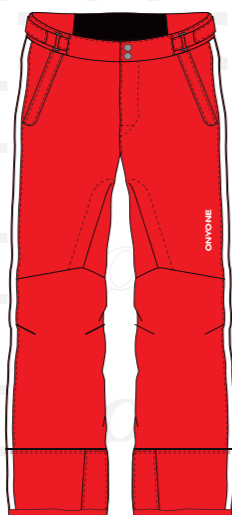
**Fabric:**  
SS STRETCH

**Performance:**

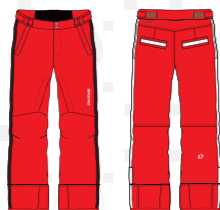
**Insulation:**  
 BODY :40g

**Pockets:**  
 \* 2 side pockets  
 \* 2 back pockets

**Features:**  
 \* Waisthold belt  
 \* Reinforced material on the knees  
 \* Suspender loop  
 \* Inner spats  
 \* Edge guard at cuffs  
 \* Side zipper to expand the waist  
 \* Length adjuster (± 5cm)  
 \* Ventilation



\* You can choose only 009(Black), 100(White), 056(Red) or 713(Blue) for the reinforced material.



Style No. SP1



Style No. SP2



Style No. SP3



Style No. SP4

**ONJ 17701**

**LADIES' CLASSIC JACKET**

**LADIES' SILHOUETTE**



**Size:**  
34 ~ 44

**Fabric:**  
SS STRETCH

**Performance:**

**Insulation:**  
 BODY :80g  
 SLEEVE :60g

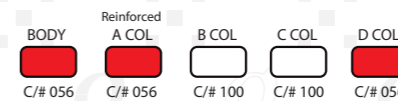
**Pockets:**  
 \* 2 side pockets  
 \* Big back pocket  
 \* Chest pocket under the front flap  
 \* Skipass pocket on the left sleeve  
 \* Inner mesh pocket

**Features:**  
 \* Velcro and zippers in same color as the fabric  
 \* Reinforced material on side and on shoulder  
 \* Detachable hood  
 \* Hood adjuster  
 \* Snowgater at cuffs  
 \* Ventilation zipper on side  
 \* Changeable collar (incl. 1 extra collar)  
 \* Receiver Loop



**Marking point**

	width	height
Pos.1	7 cm	3.5 cm
Pos.2	6 cm	3.5 cm
Pos.3	5 cm	2 cm
Pos.4	7 cm	3.5 cm
Pos.5	20 cm	11 cm
Pos.6	16 cm	9 cm



\* You can choose only 009(Black), 100(White), 056(Red) or 713(Blue) for the reinforced material.



Style No. SJ1



Style No. SJ2



Style No. SJ3



Style No. SJ4

**ONP 17721**

**LADIES' CLASSIC PANTS**

**LADIES' SILHOUETTE**



**Size:**  
34 ~ 44

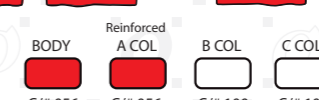
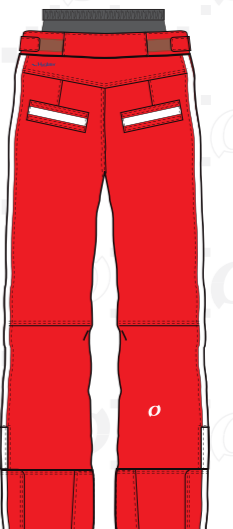
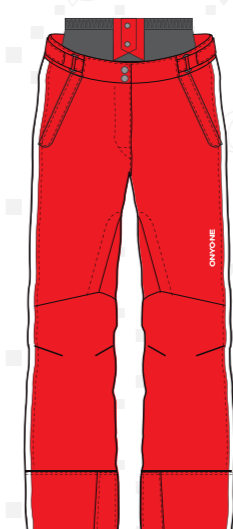
**Fabric:**  
SS STRETCH

**Performance:**

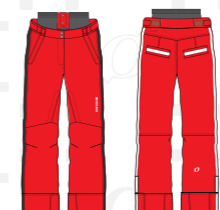
**Insulation:**  
 BODY :40g

**Pockets:**  
 \* 2 side pockets  
 \* 2 back pockets

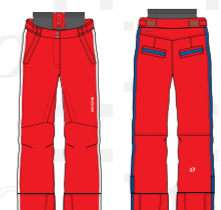
**Features:**  
 \* Waisthold belt  
 \* Reinforced material on the knees  
 \* Suspender loop  
 \* Inner spats  
 \* Edge guard at cuffs  
 \* Side zipper to expand the waist  
 \* Length adjuster (± 5cm)  
 \* Ventilation  
 \* Ladies' low rise fit



\* You can choose only 009(Black), 100(White), 056(Red) or 713(Blue) for the reinforced material.



Style No. SP1



Style No. SP2



Style No. SP3



Style No. SP4

**ONJ 17702**

**MODERN JACKET**

**LOOSE FIT**



**Size:**  
XXS/42 ~ 4XL/58

**Fabric:**  
SS STRETCH

**Performance:**  
Hyglater  
STRETCH  
HIGH Color resistance  
FULL seam sealed  
HIGH Breathability

**Insulation:**  
BODY :120g  
SLEEVE :100g



**Marking point**

	width	height
Pos.1	7 cm	4 cm
Pos.2	8 cm	4 cm
Pos.3	7 cm	2.5 cm
Pos.4	7 cm	4 cm
Pos.5	30 cm	13 cm

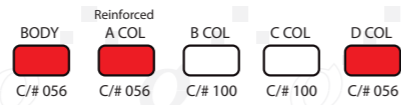


**Pockets:**

- \* 2 side pockets
- \* Big back pocket
- \* Chest pocket under the front flap
- \* Skipass pocket on the left sleeve
- \* Inner mesh pocket

**Features:**

- \* Velcro and zippers in same color as the fabric
- \* Reinforced material on side and on shoulder
- \* Detachable hood
- \* Hood adjuster
- \* Snowgater at cuffs
- \* Ventilation zipper on side
- \* Changeable collar (incl. 1 extra collar)
- \* Receiver Loop



\* You can choose only 009(Black), 100(White), 056(Red) or 713(Blue) for the reinforced material.



**ONP 17722**

**MODERN PANTS**

**LOOSE FIT**

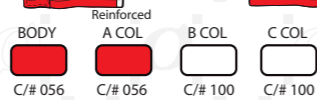
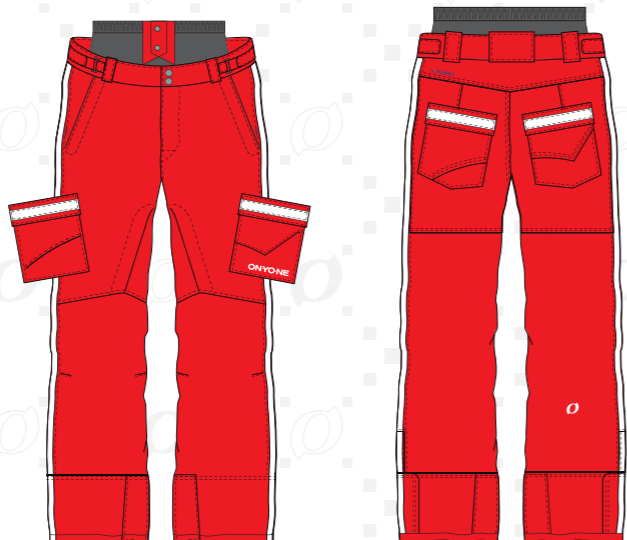


**Size:**  
XXS/42 ~ 4XL/58

**Fabric:**  
SS STRETCH

**Performance:**  
Hyglater  
STRETCH  
HIGH Color resistance  
FULL seam sealed  
HIGH Breathability

**Insulation:**  
BODY :40g



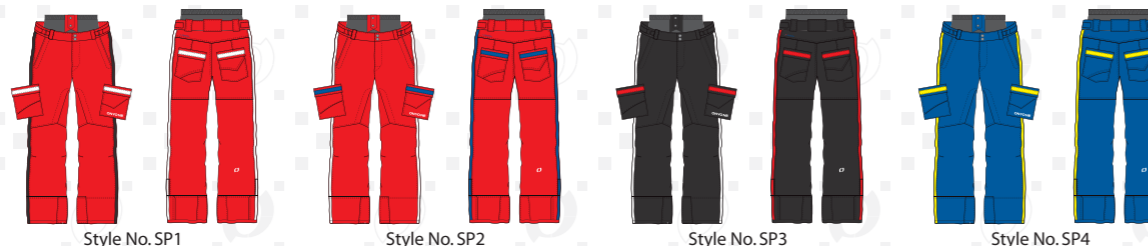
\* You can choose only 009(Black), 100(White), 056(Red) or 713(Blue) for the reinforced material.

**Pockets:**

- \* 2 side pockets
- \* 2 cargo pockets
- \* 2 back pockets

**Features:**

- \* Waisthold belt
- \* Reinforced material on the knees
- \* Suspender loop
- \* Inner spats
- \* Edge guard at cuffs
- \* Side zipper to expand the waist
- \* Length adjuster ( ± 5cm)
- \* Ventilation



**ONJ 17791** **MEN'S PADDING JACKET**

**Size:**  
XXS/42 ~ 4XL/58

**Fabric:**  
2LAYER TWILL

**Performance:**  
Hyglater  
Color resistance  
Breathability

**Insulation:**  
BODY :120g  
SLEEVE :120g

**Pockets:**

- \* 2 side pockets
- \* 1 chest pocket
- \* Ski pass pocket on left sleeve



**Marking point**

	width	height
Pos.1	7 cm	3.5 cm
Pos.2	6 cm	3.5 cm
Pos.3	6 cm	2 cm
Pos.4	7 cm	3.5 cm
Pos.5	22cm	6.5cm
Pos.6	22cm	10cm

**ONJ 17910**

**MEN'S SOFTSHELL JACKET**

**Size:**  
XXS/42 ~ XXL/54

**Fabric:**  
BONDING

**Performance:**  
STRETCH  
Color resistance  
Breathability

**Pockets:**

- \* 2 side pockets
- \* 1 chest pocket
- \* Ski pass pocket on left sleeve

**Marking point**

	width	height
Pos.1	10 cm	4 cm
Pos.2	5 cm	9 cm
Pos.3	7 cm	7 cm
Pos.4	10 cm	4 cm
Pos.5	19 cm	18 cm



**ONJ 17911**

**LADIES' SOFTSHELL JACKET**

**Size:**  
34 ~ 44

**Fabric:**  
BONDING

**Performance:**  
STRETCH  
Color resistance  
Breathability

**Pockets:**

- \* 2 side pockets
- \* 1 chest pocket
- \* Ski pass pocket on left sleeve

**Marking point**

	width	height
Pos.1	10 cm	4 cm
Pos.2	5 cm	9 cm
Pos.3	7 cm	7 cm
Pos.4	10 cm	4 cm
Pos.5	19 cm	18 cm



**ONJ 17915**

**JUNIOR SOFTSHELL JACKET**

**Size:**  
128 ~ 164

**Fabric:**  
BONDING

**Performance:**  
STRETCH  
Color resistance  
Breathability

**Pockets:**

- \* 2 side pockets
- \* 1 chest pocket
- \* Ski pass pocket on left sleeve

**Marking point**

	width	height
Pos.1	10 cm	3.5 cm
Pos.2	4 cm	8 cm
Pos.3	6 cm	6 cm
Pos.4	10 cm	3.5 cm
Pos.5	16 cm	15 cm



**ONJ 17752**

**ADULT CLUB JACKET**



**Size:**  
XXS/42 ~ 4XL/58

**Fabric:**  
SC STRETCH TWILL

**Performance:**

- Hyglater
- STRETCH
- Color resistance
- FULL seam sealed
- Breathability

**Insulation:**  
BODY :120g  
SLEEVE : 80g



**Marking point**

	width	height
Pos.1	7 cm	4 cm
Pos.2	8 cm	4 cm
Pos.3	7 cm	2.5 cm
Pos.4	7 cm	4 cm
Pos.5	26 cm	12 cm
Pos.6	22 cm	10 cm

**Pockets:**

- \* 2 side pockets
- \* Big back pocket
- \* Chest pocket under the front flap
- \* Skipass pocket on the left sleeve
- \* Inner mesh pocket

**Features:**

- \* Velcro and zippers in same color as the fabric
- \* Detachable hood
- \* Hood adjuster
- \* Snowgater at cuffs

BODY C/# 009  
A COL C/# 056  
B COL C/# 100  
C COL C/# 056



**ONP 17773**

**ADULT CLUB SIDEOPEN PANTS**



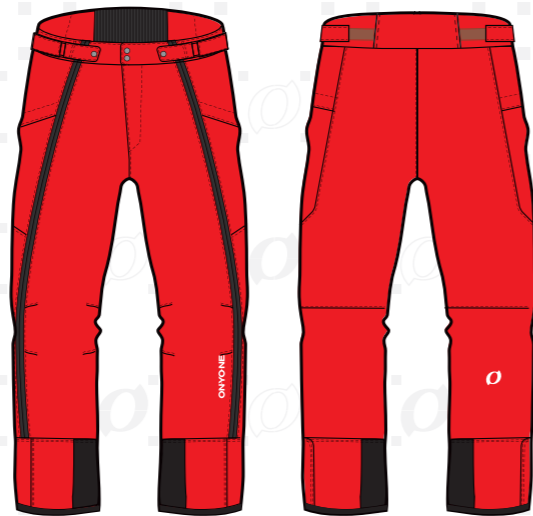
**Size:**  
XXS/42 ~ 4XL/58

**Fabric:**  
SC STRETCH TWILL

**Performance:**

- Hyglater
- STRETCH
- Color resistance
- FULL seam sealed
- Breathability

**Insulation:**  
BODY :60g



BODY C/# 056  
A COL C/# 009

**Pockets:**

- \* 2 side pockets

**Features:**

- \* Waisthold belt
- \* Suspender loop
- \* Inner spats
- \* Edge guard at cuffs
- \* Full length side zipper
- \* Length adjuster ( ± 5cm)



**ONJ 17769**

**JUNIOR CLUB JACKET**



**Size:**  
116 ~ 164

**Fabric:**  
SC STRETCH TWILL

**Performance:**

- Hyglater
- STRETCH
- Color resistance
- FULL seam sealed
- Breathability

**Insulation:**  
BODY :120g  
SLEEVE : 80g



**Marking point**

	width	height
Pos.1	6 cm	3 cm
Pos.2	6 cm	3.5 cm
Pos.3	5 cm	2 cm
Pos.4	6 cm	3 cm
Pos.5	19 cm	10 cm
Pos.6	20 cm	8 cm

**Pockets:**

- \* 2 side pockets
- \* Chest pocket under the front flap
- \* Skipass pocket on the left sleeve
- \* Inner mesh pocket

**Features:**

- \* Velcro and zippers in same color as the fabric
- \* Detachable hood
- \* Hood adjuster
- \* Snowgater at cuffs

BODY C/# 009  
A COL C/# 056  
B COL C/# 100  
C COL C/# 056



**ONP 17763**

**JUNIOR CLUB SIDEOPEN PANTS**



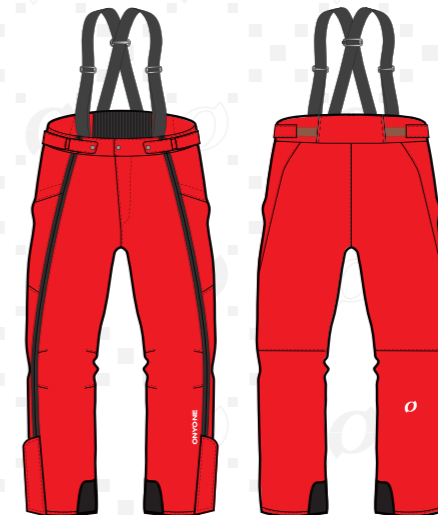
**Size:**  
116 ~ 164

**Fabric:**  
SC STRETCH TWILL

**Performance:**

- Hyglater
- STRETCH
- Color resistance
- FULL seam sealed
- Breathability

**Insulation:**  
BODY :60g



BODY C/# 056  
A COL C/# 009

**Pockets:**

- \* 2 side pockets

**Features:**

- \* Waisthold belt
- \* Inner spats
- \* Edge guard at cuffs
- \* Full length side zipper
- \* Suspender



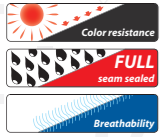
**ONJ 17802 LIFT SET JACKET**



**Size:**  
XXS/42 ~ 4XL/58

**Fabric:**  
3LAYER TAFFETA

**Performance:**



**Pockets:**

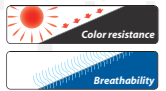
- \* 2 side pockets
- \* Chest pocket under the front flap
- \* Inner mesh pocket

**Features:**

- \* Velcro and zippers in same color as the fabric
- \* Detachable hood
- \* Hood adjuster
- \* Snowgater at cuffs
- \* Ventilation zipper on side
- \* Changeable collar
- \* Receiver Loop

**Insulation jacket:**

BODY :80g  
SLEEVE :60g



**BODY** C/# 056  
**A COL** C/# 009  
**B COL** C/# 100

**Marking point**

	width	height
Pos.1	10 cm	13 cm
Pos.2	8 cm	13 cm
Pos.3	8 cm	8 cm
Pos.4	10 cm	13 cm
Pos.5	14 cm	12 cm
Pos.6	18 cm	12 cm



\*No color variation for the insulation jacket. Black only.

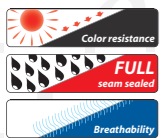
**ONP 17812 LIFT PANTS**



**Size:**  
XXS/42 ~ 4XL/58

**Fabric:**  
3LAYER TAFFETA

**Performance:**



**Insulation:**

BODY :80g

**Pockets:**

- \* 2 side pockets
- \* Waisthold belt
- \* Suspender loop
- \* Inner spats
- \* Edge guard at cuffs
- \* Side zipper to expand the waist
- \* Length adjuster ( ± 5cm)
- \* Ventilation



**A COL** C/# 009

**ONA 13CMJ LIFT CAP**

**Size:**  
FREE

**Fabric:**  
POLYESTER

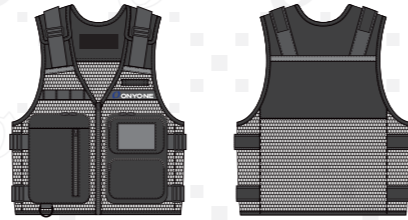
C/# 009  
BLACK



**ONV 930WV WORK VEST**

**Size:**  
FREE  
(ADJUSTABLE SIZE SYSTEM)

**Fabric:**  
MESH  
3LAYER TAFFETA



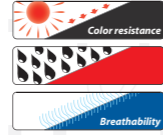
C/# 009  
BLACK

**ONP 95C77 COACH OVER PANTS**

**Size:**  
XS / M / XL

**Fabric:**  
3LAYER TAFFETA

**Performance:**



C/# 009  
BLACK

**ONO 17960/1 GS RACING SUIT**

**Size:**  
ADULT ONO 17960  
XXS/42 ~ XXL/54  
JUNIOR ONO 17961  
128 ~ 164

**Fabric:**  
PES (no FIS)



C/# 713  
BLUE

C/# 009  
BLACK

C/# 056  
RED

**ONP 17980/5 SHORT PANTS**

**Size:**  
ADULT ONP 17980  
XXS/42 ~ XXL/54  
JUNIOR ONP 17985  
128 ~ 164

**Fabric:**  
BONDING

**Performance:**



- Features:**
- \* Waisthold belt
  - \* Full length side zipper



C/# 009  
BLACK



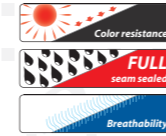
C/# 056  
RED

**ONJ 17991 RAIN JACKET**

**Size:**  
XXS/42 ~ XXL/54

**Fabric:**  
3LAYER TAFFETA

**Performance:**



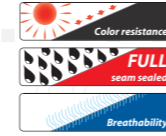
C/# 009  
BLACK

**ONJ 15998 OVER COAT**

**Size:**  
FREE  
(ADJUSTABLE SIZE SYSTEM)

**Fabric:**  
3LAYER TAFFETA

**Performance:**



C/# 009  
BLACK

**OKJ 93750 HYGLATER LONG SLEEVE**

**Size:**  
XXS/42 ~ XXL/54

**Fabric:**  
HYGLATER PES

**Performance:**



COL# 699 / NAVY

- COL# 009 / BLACK
- COL# 055 / RED
- COL# 069 / DARK WINE
- COL# 100 / WHITE
- COL# 689 / BLUE
- COL# 699 / NAVY
- COL# 847 / DARK PURPLE

**OKJ 17E02 POLO SHIRT**

**Size:**  
XS/44 ~ XXL/54

**Fabric:**  
BREATHTECH PES



C/# 009  
BLACK



C/# 100  
WHITE



C/# 698  
DARK NAVY

DESIGN CAN CHANGE

**OKJ 17E99 T-SHIRT**

**Size:**  
XS/44 ~ XXL/54

**Fabric:**  
BREATHTECH PES



C/# 009  
BLACK



C/# 100  
WHITE



C/# 699  
NAVY

DESIGN CAN CHANGE

**OKJ 17E51 LONG SLEEVE**

**Size:**  
XS/44 ~ XXL/54

**Fabric:**  
BREATHTECH PES



C/# 009  
BLACK



C/# 100  
WHITE



C/# 699  
NAVY

DESIGN CAN CHANGE