

DISTRIBUTORS

SWITZERLAND, LIECHTENSTEIN

BS TRADING AG  
RIEDLÖSERSTRASSE 5  
7302 LANDQUART  
SWITZERLAND  
Tel: +41-81-330-0080  
Fax: +41-81-330-0082  
e-mail: bstrading@bstrading.ch

AUSTRIA, FRANCE, SPAIN,  
GERMANY, ANDORRA, HUNGARY,  
CZECH REPUBLIC, SLOVAKIA,  
SLOVENIA and parts of ITALY

CTH GmbH  
GRASSE 226  
6524 FEICHTEN KAUNERTAL  
AUSTRIA  
Tel: +43-664-4233-000  
e-mail: office@cth-group.at

CHINA

BEIJING WANGLONG  
AOXUE INTERNATIONAL  
TRADE CO.,LTD.  
3099, 21 TAI, WARKERS' STADIUM  
CHAO YANG DISTRICT BEIJING  
100027 CHINA  
Tel: +86-10-6553-0360

KOREA

SHINSEGAE SPORTS CO.,LTD.  
2F, WOOCHANG B/D, 398-11,  
SUNGNAE-DONG, KANGDONG-GU,  
SEOUL, KOREA  
Tel: +82-2-473-1965  
Fax: +82-2-476-1966  
e-mail: master@shinsegaesports.co.kr

ONYONE co.,LTD.

4327 TAKAMI, NAGAOKA, NIIGATA,  
940-8548, JAPAN  
Tel: +81-258-24-0048  
Fax: +81-258-24-5422  
e-mail: international@onyone.co.jp

CHINA

ONYONE CHINA CO.,LTD.  
P.C 200062  
ROOM 508, 509, 5TH FLOOR, NO.31 BUILDING  
NO.28 DANBA ROAD, PUTUO DISTRICT  
SHANGHAI, CHINA  
Tel: +86-21-3250-1100  
Fax: +86-21-3250-2075  
e-mail: info@onyone.cn

OFFICIAL SUPPLIER OF



SHOP

HONG KONG

FUN'N SNOW SKI SPORTS  
SPECIALTY SHOP  
7/F., LOON KEE BUILDING  
275 DES VOEUX ROAD CENTRAL  
SHEUNG WAN, HONG KONG  
Tel: +86-852-2866-7847  
Fax: +86-852-2858-1292  
e-mail: enquiry@funnsnow.com

ONYONE

2015/2016 AUTUMN & WINTER PROFESSIONAL



by courtesy of FAE

ANDORRA NATIONAL TEAM



by courtesy of ENSA

ECOLE NATIONALE DES SPORTS  
DE MONTAGNE (FRANCE)



Photo credit Mario Curti

SWISS SNOWSPORTS/DEMO TEAM



by courtesy of ENSA

Photo credit Mario Curti

Photo by Hiroyuki Sato

by courtesy of ENSA



# ONYONE 2015-16 COLLECTION

## SKI SCHOOL, SKI CLUB, LIFT, STAFF AND ACCESSORIES

### LINE UP



CHOOSE YOUR FAVORITE COLOR!

#### COLOR SIMULATOR

Visit ONYONE webpage !

→ [www.onyone.co.jp/english](http://www.onyone.co.jp/english)



### SKI SCHOOL



ONJ 18703  
UNISEX SHELL JACKET



ONJ 17700  
MEN'S  
CLASSIC JACKET



ONJ 17701  
LADIES'  
CLASSIC JACKET



ONP 17722  
MODERN PANTS



ONP 17720  
MEN'S CLASSIC PANTS



ONP 17721  
LADIES' CLASSIC PANTS

### SKI CLUB



ONJ 17752  
ADULT CLUB JACKET



ONJ 17769  
JUNIOR CLUB JACKET



ONP 17773  
ADULT CLUB  
SIDEOPEN PANTS



ONP 17763  
JUNIOR CLUB  
SIDEOPEN PANTS

### SKI LIFT



ONJ 18803  
LIFT JACKET



ONJ 18804  
LIFT SOFTSHELL JACKET



ONP 18813  
LIFT PANTS

### RAIN / WINDPROOF



ONJ 15998  
OVER COAT



ONJ 17991  
RAIN JACKET



ONP 17950  
RAIN SIDEOPEN PANTS

### ACCESSORY



ONA 11099  
SUSPENDER



ONA 13CMJ  
LIFT CAP



OKJ 18E02  
POLO SHIRT



OKJ 18E99  
T-SHIRT



OKJ 18E51  
LONG SLEEVE



OKJ 93750  
HYGLATER LONG SLEEVE

### INNER JACKET



ONJ 18793  
MEN'S PADDING JACKET



ONJ 18794  
LADIES' PADDING JACKET



ONJ 17910  
MEN'S  
SOFTSHELL JACKET



ONJ 17911  
LADIES'  
SOFTSHELL JACKET



ONJ 17915  
JUNIOR  
SOFTSHELL JACKET

### RACING



ONO 18960  
GS RACING SUITS



ONO 18961  
JUNIOR  
GS RACING SUITS



ONP 17980  
SHORT PANTS



ONP 17985  
JUNIOR SHORT PANTS

### STAFF



ONV 930WV  
WORK VEST



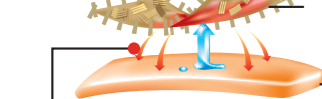
ONP 95C77  
COACH OVER PANTS



## TEMPERATURE CONTROL SYSTEM

**Small amount of perspiration  
Heat up**

A special powder is integrated around the fiber in molecular level. It generates heat when absorbing moisture.



The fabric generates heat and warms the body.

**Large amount of perspiration  
Cool down**

As the greater moisture is produced, the moisture is released giving a cooling down effect.

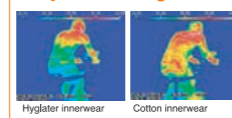


The action of evaporation heat cools down the body.

**Hyglater keeps you dry.**

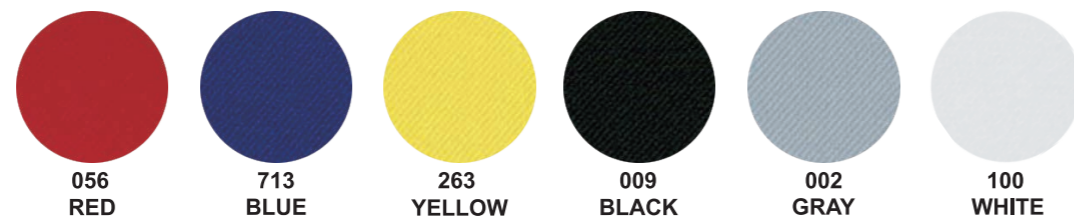
At the start up of the sporting activity, the special powder reacts to the moisture from perspiration and generates heat. This heat warms up the human body fast and gives better condition for the physical movement.

On the contrary, as soon as the greater moisture is produced, the special powder reacts and starts to cool down. The cooling down effect enables the human body to continue the sporting activity in the comfortable condition.

**Thermograph comparison of  
Hyglater innerwear and  
cotton innerwear surface  
temperature during exercise**

Hyglater

## COLOR ORDER SYSTEM / MARKING

**CHOOSE YOUR FAVORITE COLOR!**

THESE 5 SPECIAL COLORS ARE ONLY AVAILABLE UNDER SPECIAL CONDITIONS!

## COLOR SIMULATOR

**Marking point**

	width	height
Pos.1	xx cm	xx cm
Pos.2	xx cm	xx cm
Pos.3	xx cm	xx cm
Pos.4	xx cm	xx cm
Pos.5	xx cm	xx cm

## PRINTING, EMBROIDERY AND BADGES

We offer makings for your logos, logos of your sponsors or other requests as well. You will find the marking places on the design and also information about the max. size for each position. We offer printing, embroidery and badges.

Please contact your dealer for necessary information about the marking data.

## COLOR RESISTANCE

**COLOR RESISTANCE**

ONYONE's exclusive color treatment allows our fabric to keep its original color after exposed to strong sunlight for long term usage. Each of our original fabrics is tested and fully controlled under our original testing method which has been developed under JIS (Japanese Industrial Standards).

\*ONYONE has develop its own quality standard above level 5

SKI SCHOOL  
- OUTER SHELL -

**LEVEL 6~7**

SS STRETCH 2L/SS OXFORD 2L

Test method for color fastness to enclosed carbon arc lamp light (JIS L0842 1~5)

SKI CLUB  
- OUTER SHELL -

**LEVEL 3~4**

SC STRETCH TWILL 2L

Test method for color fastness to enclosed carbon arc lamp light (JIS L0842 1~5)

SKI LIFT  
- OUTER SHELL -

**LEVEL 6~7**

SS STRETCH 2L/SS OXFORD 2L

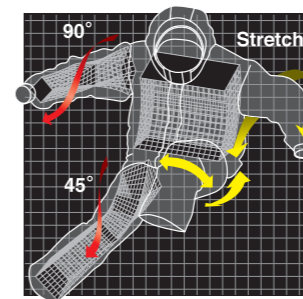
Test method for color fastness to enclosed carbon arc lamp light (JIS L0842 1~5)

## 3D CUTTING / LIGHTWEIGHT TECHNOLOGY



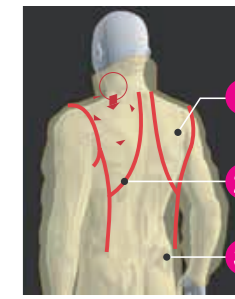
## 3-dimensional cutting technique

An analysis of the human body has been conducted by viewing its shape, movement and silhouette. From this analysis, we have developed a special 3-dimensional cutting allowing all movements in the high level.

**LIGHTWEIGHT TECHNOLOGY**

Reduces stress for better comfortability.

- 1 Weight and feeling of heaviness of the clothing are stress for the athletes and they can disturb their concentration and sustaining power.
- 2 Lightweight technology is a special system, which reduces the actual weight of the clothing and also improves the feeling of heaviness
- 3 The main concept of this system is to reduce stress for better comfortability.



## PERFORMANCE

## ICON CHART



Temperature control system. Hyglater controls the temperature of your skin and muscle.



The stretchable fabric supports your body movement and gives you comfortable fitting.



Color resistance level 6 - 7 based on ONYONE's original testing method



Color resistance level 3 - 4 JIS L0842



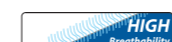
Waterproofness 196kpa (20,000mm)/ Full seam sealed \*Initial data by JIS L1092 B method



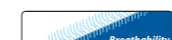
Waterproofness 196kpa (20,000mm)/ Crucial part seam sealed \*Initial data by JIS L1092 B method



Waterproofness 196kpa (20,000mm) \*Initial data by JIS L1092 B method



Moisture permeability 8,000g/m<sup>2</sup>/24hrs



Moisture permeability 6,000g/m<sup>2</sup>/24hrs

## SIZE CHART

## MEN'S SCHOOL, CLUB, LIFT JACKET

EU SIZE	XXS/42	XS/44	S/46	M/48	L/50	XL/52	XXL/54	3XL/56	4XL/58
HEIGHT	160	165	170	175	180	185	190	195	200
CHEST	86	90	94	98	102	106	110	114	118
UNIT	cm	cm	cm	cm	cm	cm	cm	cm	cm

## LADIES' SCHOOL JACKET

EU SIZE	34	36	38	40	42	44
HEIGHT	160	163	166	169	172	175
CHEST	80	84	88	92	96	100
UNIT	cm	cm	cm	cm	cm	cm

## MEN'S SCHOOL, CLUB, LIFT PANTS

EU SIZE	XXS/42	XS/44	S/46	M/48	L/50	XL/52	XXL/54	3XL/56	4XL/58
HEIGHT	160	165	170	175	180	185	190	195	200
WAIST	73	76	79	82	85	88	91	94	97
UNIT	cm	cm	cm	cm	cm	cm	cm	cm	cm

## LADIES' SCHOOL PANTS

EU SIZE	34	36	38	40	42	44
HEIGHT	160	163	166	169	172	175
WAIST	62	66	70	74	78	82
UNIT	cm	cm	cm	cm	cm	cm

## JUNIOR CLUB JACKET &amp; PANTS

EU SIZE	116	128	140	152	164
HEIGHT	116	128	140	152	164
WAIST	63	65	67	71	75
UNIT	cm	cm	cm	cm	cm

"Hyglater" temperature control system  
on the liner of jacket for great comfortability



Chest pocket under the front flap



Ventilation zippers on side



Big back pocket



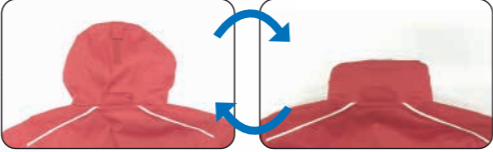
Side zipper to  
expand the waist



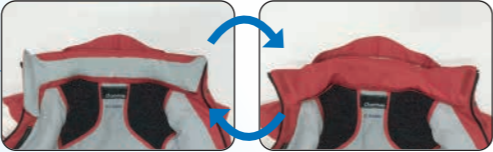
Ventilation zippers



Detachable hood



Changeable collar



Reinforced material on the  
side and on the shoulder



Inner mesh pocket



Waisthold belt



"Hyglater" on the hip parts



Reinforced material  
on knees



## ONJ 18703 UNISEX SHELL JACKET NEW

Performance:     



COLOR ORDER SYSTEM	BODY	Reinforced A COL	B COL	C COL
	C/# 056	C/# 056	C/# 100	C/# 100

\* You can choose only 009(Black), 100(White), 056(Red) or 713(Blue) for the reinforced material.

COLOR SAMPLES



Style No. SP1



Style No. SP2



Style No. SP3

**Size:**

XXS/42 ~ 3XL/56

**Fabric:**

SS STRETCH

**Insulation:**

BODY : NO PADDING  
SLEEVE : NO PADDING

**Pockets:**

- \* 2 side pockets
- \* Big back pocket
- \* Chest pocket under the front flap
- \* Skipass pocket on the left sleeve
- \* Inner mesh pocket

**Features:**

- \* Velcro and zippers in same color as the fabric
- \* Reinforced material on side and on shoulder
- \* Hood adjuster
- \* Snowgater at cuffs
- \* Ventilation zipper on side
- \* Receiver Loop

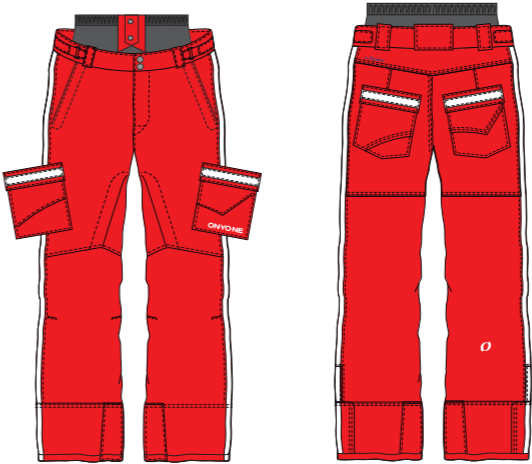
 **Marking point**

	width	height
Pos. 1	7 cm	3.5 cm
Pos. 2	8 cm	4 cm
Pos. 3	7 cm	2.5 cm
Pos. 4	7 cm	3.5 cm
Pos. 5	30 cm	15 cm
Pos. 6	24 cm	14 cm

## ONP 17722 MODERN PANTS

Performance:     

LOOSE FIT



COLOR ORDER SYSTEM	BODY	Reinforced A COL	B COL	C COL
	C/# 056	C/# 056	C/# 100	C/# 100

\* You can choose only 009(Black), 100(White), 056(Red) or 713(Blue) for the reinforced material.

COLOR SAMPLES



Style No. SP1



Style No. SP2



Style No. SP3

**Size:**

XXS/42 ~ 3XL/56

**Fabric:**

SS STRETCH

**Insulation:**

BODY : 40g

**Pockets:**

- \* 2 side pockets
- \* 2 cargo pockets
- \* 2 back pockets

**Features:**

- \* Waisthold belt
- \* Reinforced material on the knees
- \* Suspender loop
- \* Inner spats
- \* Edge guard at cuffs
- \* Side zipper to expand the waist
- \* Length adjuster ( ± 5cm)
- \* Ventilation

ONJ 17700

MEN'S CLASSIC JACKET






REGULAR FIT

Performance:     



COLOR SAMPLES



COLOR ORDER SYSTEM	BODY	Reinforced A COL	B COL	C COL	D COL
					
	C/# 056	C/# 056	C/# 100	C/# 100	C/# 056

\* You can choose only 009(Black), 100(White), 056(Red) or 713(Blue) for the reinforced material.

Size:

S/46 ~ 3XL/56

Fabric:

SS STRETCH

Insulation:

BODY :80g  
SLEEVE :60g

Pockets:

- \* 2 side pockets
- \* Big back pocket
- \* Chest pocket under the front flap
- \* Skipass pocket on the left sleeve
- \* Inner mesh pocket

Features:

- \* Velcro and zippers in same color as the fabric
- \* Reinforced material on side and on shoulder
- \* Detachable hood
- \* Hood adjuster
- \* Snowgater at cuffs
- \* Ventilation zipper on side
- \* Changeable collar (incl. 1 extra collar)
- \* Receiver Loop



Marking point

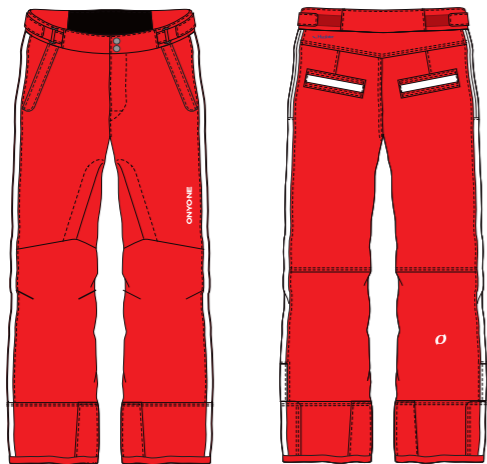
	width	height
Pos. 1	7 cm	3.5 cm
Pos. 2	6 cm	3.5 cm
Pos. 3	5 cm	2 cm
Pos. 4	7 cm	3.5 cm
Pos. 5	20 cm	11 cm
Pos. 6	16 cm	9 cm





ONP 17720

MEN'S CLASSIC PANTS

REGULAR FIT

Performance:     



COLOR ORDER SYSTEM	BODY	Reinforced A COL	B COL	C COL
				
	C/# 056	C/# 056	C/# 100	C/# 100

\* You can choose only 009(Black), 100(White), 056(Red) or 713(Blue) for the reinforced material.

COLOR SAMPLES



Size:

S/46 ~ 3XL/56

Fabric:

SS STRETCH

Insulation:

BODY :40g

Pockets:

- \* 2 side pockets
- \* 2 back pockets

Features:

- \* Waisthold belt
- \* Reinforced material on the knees
- \* Suspenders loop
- \* Inner spats
- \* Edge guard at cuffs
- \* Side zipper to expand the waist
- \* Length adjuster ( ± 5cm)
- \* Ventilation

ONJ 17701

LADIES' CLASSIC JACKET




LADIES' SILHOUETTE

Performance:     



COLOR SAMPLES



COLOR ORDER SYSTEM	BODY	Reinforced A COL	B COL	C COL	D COL
					
	C/# 056	C/# 056	C/# 100	C/# 100	C/# 056

\* You can choose only 009(Black), 100(White), 056(Red) or 713(Blue) for the reinforced material.

Size:

34 ~ 42

Fabric:

SS STRETCH

Insulation:

BODY :80g  
SLEEVE :60g

Pockets:

- \* 2 side pockets
- \* Big back pocket
- \* Chest pocket under the front flap
- \* Skipass pocket on the left sleeve
- \* Inner mesh pocket

Features:

- \* Velcro and zippers in same color as the fabric
- \* Reinforced material on side and on shoulder
- \* Detachable hood
- \* Hood adjuster
- \* Snowgater at cuffs
- \* Ventilation zipper on side
- \* Changeable collar (incl. 1 extra collar)
- \* Receiver Loop



Marking point

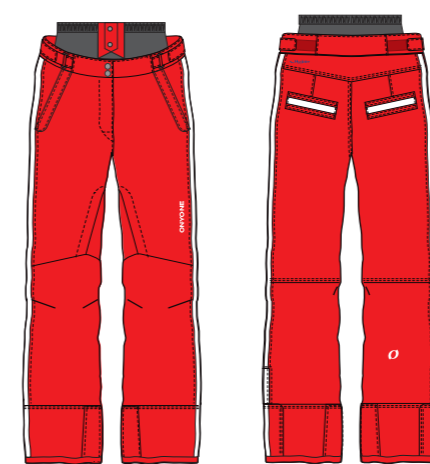
	width	height
Pos. 1	7 cm	3.5 cm
Pos. 2	6 cm	3.5 cm
Pos. 3	5 cm	2 cm
Pos. 4	7 cm	3.5 cm
Pos. 5	20 cm	11 cm
Pos. 6	16 cm	9 cm



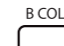

ONP 17721

LADIES' CLASSIC PANTS

LADIES' SILHOUETTE

Performance:     



COLOR ORDER SYSTEM	BODY	Reinforced A COL	B COL	C COL
				
	C/# 056	C/# 056	C/# 100	C/# 100

\* You can choose only 009(Black), 100(White), 056(Red) or 713(Blue) for the reinforced material.

COLOR SAMPLES



Size:

34 ~ 42

Fabric:

SS STRETCH

Insulation:

BODY :40g

Pockets:

- \* 2 side pockets
- \* 2 back pockets

Features:

- \* Waisthold belt
- \* Reinforced material on the knees
- \* Suspenders loop
- \* Inner spats
- \* Ladies' low rise fit
- \* Edge guard at cuffs
- \* Side zipper to expand the waist
- \* Length adjuster ( ± 5cm)
- \* Ventilation

ONJ 18793  
ONJ 18794

MEN'S PADDING JACKET  
LADIES' PADDING JACKET

NEW

Performance:  



**Size:**  
MEN'S : S/46 ~ 3XL/56  
LADIES' : 34 ~ 42

**Fabric:**  
2LAYER TWILL

**Insulation:**  
BODY : 120g  
SLEEVE : 120g

**Pockets:**  
\* 2 side pockets  
\* 1 chest pocket

ONJ 17910  
ONJ 17911  
ONJ 17915

MEN'S SOFTSHELL JACKET  
LADIES' SOFTSHELL JACKET  
JUNIOR SOFTSHELL JACKET

Performance:    



**Size:**  
MEN'S : XXS/42 ~ XXL/54  
LADIES' : 34 ~ 42  
JUNIOR : 128 ~ 164

**Fabric:**  
BONDING

**Pockets:**  
\* 2 side pockets  
\* 1 chest pocket  
\* Ski pass pocket on left sleeve

MEN'S , LADIES'		
	width	height
Pos. 1	10 cm	4 cm
Pos. 2	5 cm	9 cm
Pos. 3	7 cm	7 cm
Pos. 4	10 cm	4 cm
Pos. 5	19 cm	18 cm

JUNIOR		
	width	height
Pos. 1	10 cm	3.5 cm
Pos. 2	4 cm	8 cm
Pos. 3	6 cm	6 cm
Pos. 4	10 cm	3.5 cm
Pos. 5	16 cm	15 cm

ONJ 15998

OVER COAT

Performance:    



**Size:**  
FREE (ADJUSTABLE SIZE SYSTEM)

**Fabric:**  
3LAYER TAFFETA

ONJ 17991

RAIN JACKET

Performance:    



**Size:**  
XXS/42 ~ XXL/54

**Fabric:**  
3LAYER TAFFETA

ONP 17950

RAIN SIDEOPEN PANTS

Performance:    



**Size:**  
XXS/42 ~ XXL/54

**Fabric:**  
3LAYER TAFFETA

ONV 930WV

WORK VEST



**Size:**  
FREE (ADJUSTABLE SIZE SYSTEM)

**Fabric:**  
MESH, 3LAYER TAFFETA

ONP 95C77

COACH OVER PANTS

Performance:   



**Size:**  
XS / M / XL

**Fabric:**  
3LAYER TAFFETA

ONJ 17752

ADULT CLUB JACKET

Performance:     



COLOR SAMPLES



- Size:**  
S/46 ~ 3XL/56

**Fabric:**  
SC STRETCH TWILL

**Insulation:**  
BODY : 120g  
SLEEVE : 80g
- Pockets:**  
\* 2 side pockets  
\* Big back pocket  
\* Chest pocket under the front flap  
\* Skipass pocket on the left sleeve  
\* Inner mesh pocket
- Features:**  
\* Velcro and zippers in same color as the fabric  
\* Detachable hood  
\* Hood adjuster  
\* Snowgater at cuffs
- Marking point**

	width	height
Pos. 1	7 cm	4 cm
Pos. 2	8 cm	4 cm
Pos. 3	7 cm	2.5 cm
Pos. 4	7 cm	4 cm
Pos. 5	26 cm	12 cm
Pos. 6	22 cm	10 cm

ONJ 17769

JUNIOR CLUB JACKET

Performance:     



COLOR SAMPLES



- Size:**  
116 ~ 164

**Fabric:**  
SC STRETCH TWILL

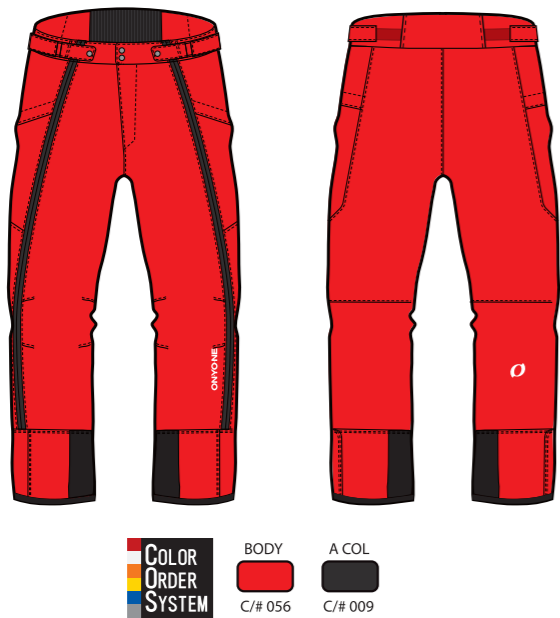
**Insulation:**  
BODY : 120g  
SLEEVE : 80g
- Pockets:**  
\* 2 side pockets  
\* Chest pocket under the front flap  
\* Skipass pocket on the left sleeve  
\* Inner mesh pocket
- Features:**  
\* Velcro and zippers in same color as the fabric  
\* Detachable hood  
\* Hood adjuster  
\* Snowgater at cuffs
- Marking point**

	width	height
Pos. 1	6 cm	3 cm
Pos. 2	6 cm	3.5 cm
Pos. 3	5 cm	2 cm
Pos. 4	6 cm	3 cm
Pos. 5	19 cm	10 cm
Pos. 6	20 cm	8 cm

ONP 17773

ADULT CLUB SIDEOPEN PANTS

Performance:     



COLOR SAMPLES



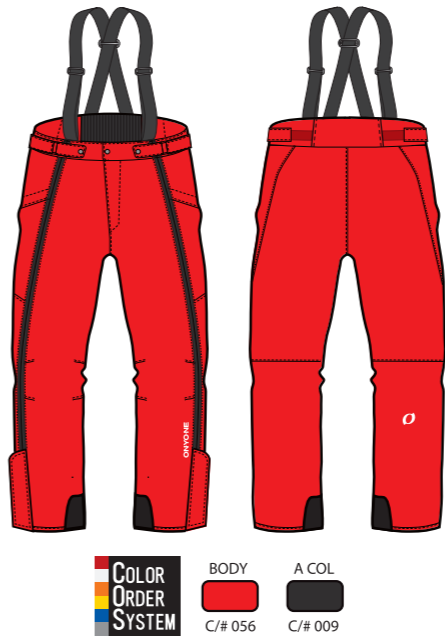
- Size:**  
S/46 ~ 3XL/56

**Fabric:**  
SC STRETCH TWILL
- Insulation:**  
BODY : 60g
- Pockets:**  
\* 2 side pockets
- Features:**  
\* Waisthold belt  
\* Suspender loop  
\* Inner spats  
\* Edge guard at cuffs  
\* Full length side zipper  
\* Length adjuster (± 5cm)

ONP 17763

JUNIOR CLUB SIDEOPEN PANTS

Performance:     



COLOR SAMPLES



- Size:**  
116 ~ 164

**Fabric:**  
SC STRETCH TWILL
- Insulation:**  
BODY : 60g
- Pockets:**  
\* 2 side pockets
- Features:**  
\* Waisthold belt  
\* Inner spats  
\* Edge guard at cuffs  
\* Full length side zipper  
\* Suspender



## ONO 18960/18961

GS RACING SUITS **NEW**Performance: **STRETCH**

Sapphire



Ruby



Fire opal

Size:

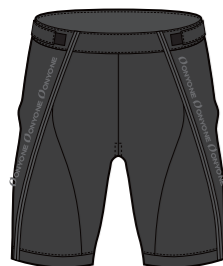
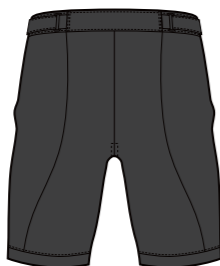
ADULT **ONO 18960**  
XXS/42 ~ XXL/54JUNIOR **ONO 18961**  
128 ~ 164

Fabric:

PES (no FIS)

## ONP 17980/17985

## SHORT PANTS

Performance: **STRETCH**C/# 009  
BLACKC/# 056  
RED

Size:

ADULT **ONP 17980**  
XXS/42 ~ XXL/54JUNIOR **ONP 17985**  
128 ~ 164

Fabric:

BONDING

Features:

- \* Waisthold belt
- \* Full length side zipper

## ONA 11099 SUSPENDER

C/# 009  
BLACK

Size:

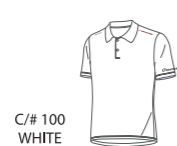
FREE

Fabric:

POLYESTER

## OKJ 18E02 POLO SHIRT

Design can be changed

C/# 009  
BLACKC/# 100  
WHITEC/# 698  
DARK NAVY

Size:

XS/44 ~ XXL/54

Fabric:

BREATHTECH PES

## OKJ 18E99 T-SHIRT

Design can be changed

C/# 009  
BLACKC/# 100  
WHITEC/# 698  
DARK NAVY

Size:

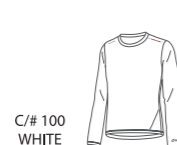
XS/44 ~ XXL/54

Fabric:

BREATHTECH PES

## OKJ 18E51 LONG SLEEVE

Design can be changed

C/# 009  
BLACKC/# 100  
WHITEC/# 698  
DARK NAVY

Size:

XS/44 ~ XXL/54

Fabric:

BREATHTECH PES

## OKJ 93750 HYGLATER LONG SLEEVE

Performance: **Hyglater**

C/# 699 / NAVY

- COL# 009 / BLACK
- COL# 055 / RED
- COL# 069 / DARK WINE
- COL# 100 / WHITE
- COL# 689 / BLUE
- COL# 699 / NAVY
- COL# 847 / DARK PURPLE

Size:

XXS/42 ~ XXL/54

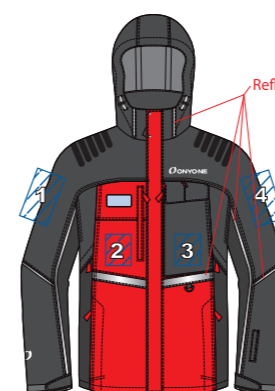
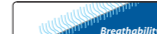
Fabric:

HYGLATER PES

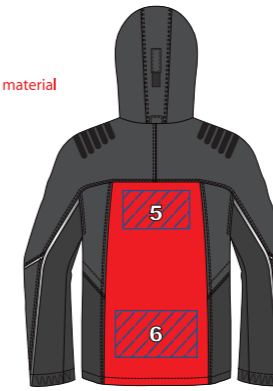
## ONJ 18803

LIFT JACKET **NEW**

Performance:



Reflection material



\* You can choose only 009(Black) for the reinforced material.

Size:

XXS/42 ~ XXL/54

Insulation:

BODY :80g  
SLEEVE :80g

Fabric:

PES

Features:

- \* Velcro and zippers in same color as the fabric
- \* Reinforced material on side and sleeve
- \* Reinforced print on shoulder

Pockets:

- \* 2 side pockets
- \* Chest pocket under the front flap
- \* Detachable hood
- \* Hood adjuster
- \* Snowgater at cuffs
- \* Inner mesh pocket
- \* Ski pass pocket on the left sleeve
- \* Ventilation zipper on side
- \* Receiver Loop

Marking point

	width	height
Pos.1	12 cm	16 cm
Pos.2	7 cm	8 cm
Pos.3	7 cm	8 cm
Pos.4	12 cm	16 cm
Pos.5	24 cm	12 cm
Pos.6	24 cm	14 cm

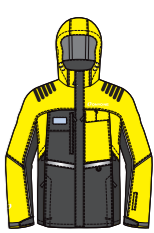
## COLOR SAMPLES



Style No. SJ1



Style No. SJ2

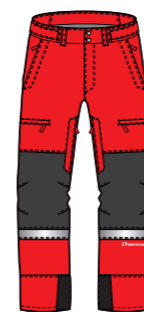
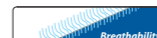


Style No. SJ3

## ONP 18813

LIFT PANTS **NEW**

Performance:



\* You can choose only 009(Black) for the reinforced material.

Size:

XXS/42 ~ XXL/54

Fabric:

PES

Insulation:

BODY :80g

Pockets:

- \* 2 side pockets
- \* 2 cargo pockets

Features:

- \* Waisthold belt
- \* Reinforced material on the knees
- \* Side zipper to expand the waist
- \* Edge guard at cuffs
- \* Length adjuster (± 5cm)
- \* Ventilation
- \* Suspender loop
- \* Inner spats
- \* Reflection material

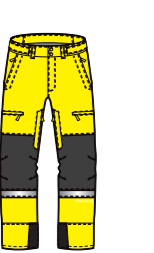
## COLOR SAMPLES



Style No. SJ1



Style No. SJ2



Style No. SJ3

## ONJ 18804

LIFT SOFTSHELL JACKET **NEW**

Performance:



BLACK x RED



Detachable sleeve



BLACK

Size:

XXS/42 ~ XXL/54

Fabric:

BONDING

Features:

- \* 2 side pockets
- \* Chest pocket
- \* Detachable sleeve

## ONA 13CMJ LIFT CAP

C/# 009  
BLACK

Size:

FREE

Fabric:

POLYESTER